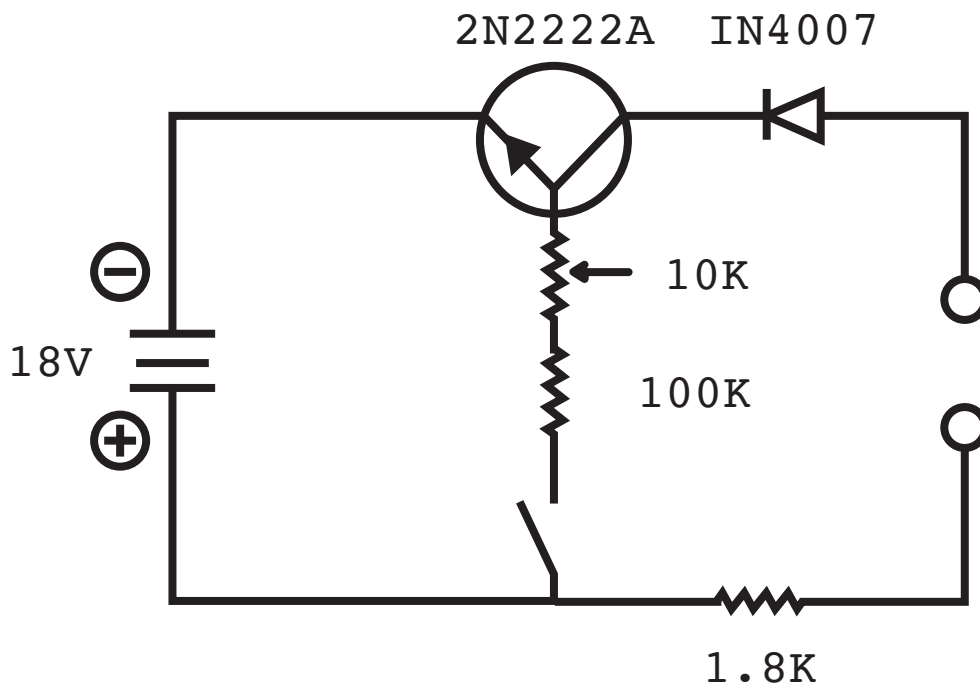


# Electro Etcher

With the combination of a solution made of vinegar and salt, the circuit presented chemically burns into metal material once activated.



# Tattoo Gun

A simple circuit involving ink being moved from the pressure of a pressure of an electric motor. Designed to be ergonomic for it's creator.

Copper Sheet

Steel Sheet

Galvanized Steel Sheet

Test Samples

Try Me!