







3



4

5



6



SEXY

9

AWKWARD

10

CREASTIMU- LATION

12

11

*“THE SIGNATURE OF THE DESIGNER IS
CLEARLY VISIBLE IN THIS PLAYFUL AND
COMFORTABLE CHAIR”*

– AYBAR GALLERY

“**RICHARD HUTTEN DID NOT VIEW DESIGN AS A WAY TO SOLVE PROBLEMS BUT RATHER TO STIMULATE THE CREATIVITY OF THE USER**”

– MUSEUM BOIJMANS VAN BEUNINGEN

“**THIS CHAIR WAS BASED ON A FAMOUS SCENE FROM THE FILM *BASIC INSTINCT*, IN WHICH ACTRESS SHARON STONE PROVOCATIVE OPENS HER LEGS WIDE DURING A POLICE INTERROGATION**”

– NEDERLANDSDESIGN.COM

“THE CHAIR WAS USED IN IN MULTIPLE PORNOFILMS AND IS THEREFOR THE MOST VIEWED CHAIR IN THE WORLD”

(THIS IS A LIE)

15

“ THE CHAIR IS MADE OF MIRRORS FROM THE VERSAILLES CASTLE”

(THIS IS A LIE)

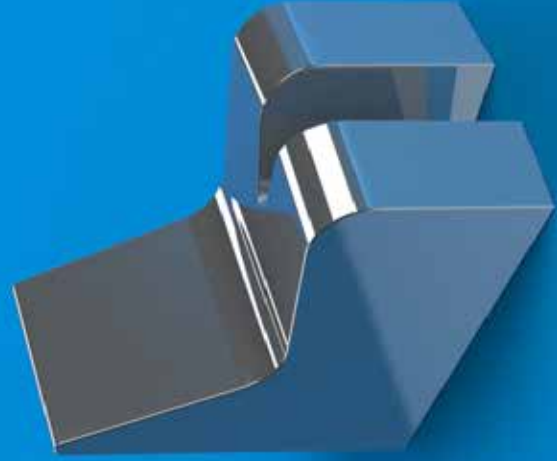
16

**“ THE CHAIR WAS ORIGINALLY DESIGNED BY
FILIPPO BRUNELLESCHI, A FAMOUS ARCHITECT
FROM THE ITALIAN RENAISSANCE, BUT WAS
NEVER EXECUTED ”**

(THIS IS A LIE)

17

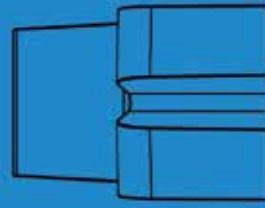
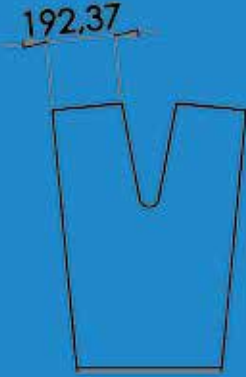
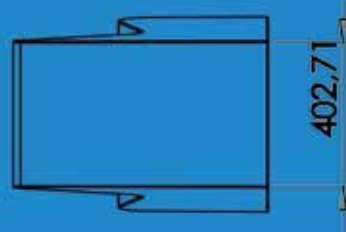
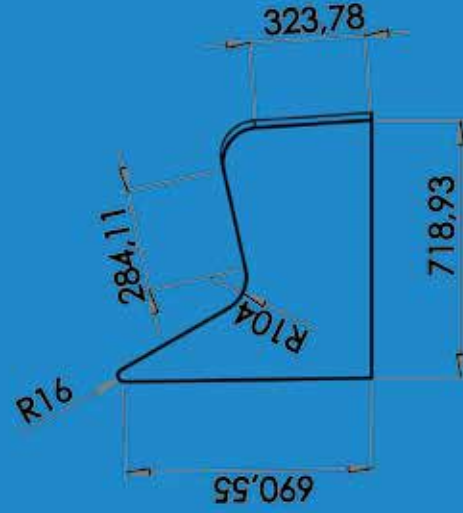
18



19



20



20 Images Jon

1 image of your selected art work

1. Sexy/Relax – Richard Hutten
The Rotterdam based designer Richard Hutten did not view design as a way to solve problems but rather to stimulate the creativity of the user. What is immediately striking is the wedge-shaped split in the seat, that forces you to sit with your legs wide apart.

Argumentation: relevance, aesthetics and gave me some nice ideas.

1 image of a place that is relevant to the work

2. When designing the chair, Hutten was inspired by the teasing cigarette scene from Paul Verhoeven's film 'Basic Instinct' with Sharon Stone. -> He made this story up.

Argumentation: this scene works as an inspiration source but is also the perfect context for the chair.

2 images of something somehow relevant to your chosen work from around the same time

3. Dombo Mug – Richard Hutten
In 2000 Richard Hutten designed his world famous Dombo mug. The idea for this design was to exaggerate the drinking movement by adding two big handles. The cups are very easy to hold for young children, learning them to drink from their own cup for the first time. But the biggest asset of this cup is, according to Hutten, not the ergonomics, but the fact that it makes people happy and smile when they see and use it.

Argumentation: This mug also forces you to do something.

4. EarChair – Studio Makkink & Bey
The EarChair by Studio Makkink & Bey is a statement piece in every office; sturdy in design and appealing in shape, this chair is sure to turn heads. In sets of two or four, the EarChair creates an intimate setting that ensures minimal distraction from the hustle and bustle of the office environment.

Argumentation: this chair stimulates the creativity of the user and has a clear purpose.

2 images of something somehow relevant to your chosen work from 100 years or more prior

5. High-wheeler – Eugène Meyer
Eugène Meyer, a Frenchman, invented the high-wheeler bicycle design in 1869 and fashioned the wire-spoke tension wheel. was the first machine to be called a "bicycle". It was popular in the 1870s and 1880s, with its large front wheel providing high speeds (large distance for every rotation of the legs) and comfort (shock absorption through the wheel).

Argumentation: the shape determines the way of using it. The extraordinary shape also led to creativity for the user and inventions of better bicycles.

6. Rocking Chair No. 1 - Thonet
Despite its industrial ethos, Thonet drew inspiration from Arts and Crafts design in the styling of its products. The company developed its first rocking chair, the Rocking Chair No. 1, in 1860.

Argumentation: playful, innovative, sexy (at the time ☹️), it also forces the user to do something and it's a chair, nevertheless.

2 images of something somehow relevant to your chosen work from within the last 2 years

7. "Baby we made it" – Joseph Kilbansky
The turtle sculpture 'Baby we made it' is an ode to success (2016). Kilbansky: "Turtles are, of course, sluggish animals and it can therefore take a long time before they meet. The symbolism that it can sometimes take a long time before you get to where you want to be is for Joseph a source of inspiration for this work. Another reason to create this piece is to show uncomfortable things and with this piece you are forced to look at it.

Argumentation: sexy, shiny, sculpture and portrays something uncomfortable.

8. Slip Chair - Snarkitecture
Snarkitecture has designed a chair for Portuguese brand UVA that features a wooden frame that is seemingly slipping onto its side. New York studio Snarkitecture designed the Sijp chair to appear unusable, giving it a wonky structure topped with a marble seat. Working alongside craftspeople from Págos de Ferreira in the north of Portugal, the designers built a frame from white ash wood. To counteract its leaning frame, the pieces of stone forming the seat was sliced at an angle – evening out its surface.

Argumentation:

3 key words that sum up the meaning of the work

9. Sexy
10. Uncomfortable
11. Creastimulation

3 textual quotes you have found that are interesting while investigating your work

12. "The signature of the designer is clearly visible in this playful and comfortable chair"
– Aybar Gallery

13. "Richard Hutten did not view design as a way to solve problems but rather to stimulate the creativity of the user" – Museum Boijmans Van Beuningen

14. "This chair was based on a famous scene from the film Basic Instinct, in which actress Sharon Stone provocative opens her legs wide during a police interrogation" – Nederlandsdesign.com

3 textual lies you have made up that make the work more interesting

- 15.
- 16.
- 17.

3 sketches/renderings/collages that depict a radical new context for the work

- 18.
- 19.
- 20.