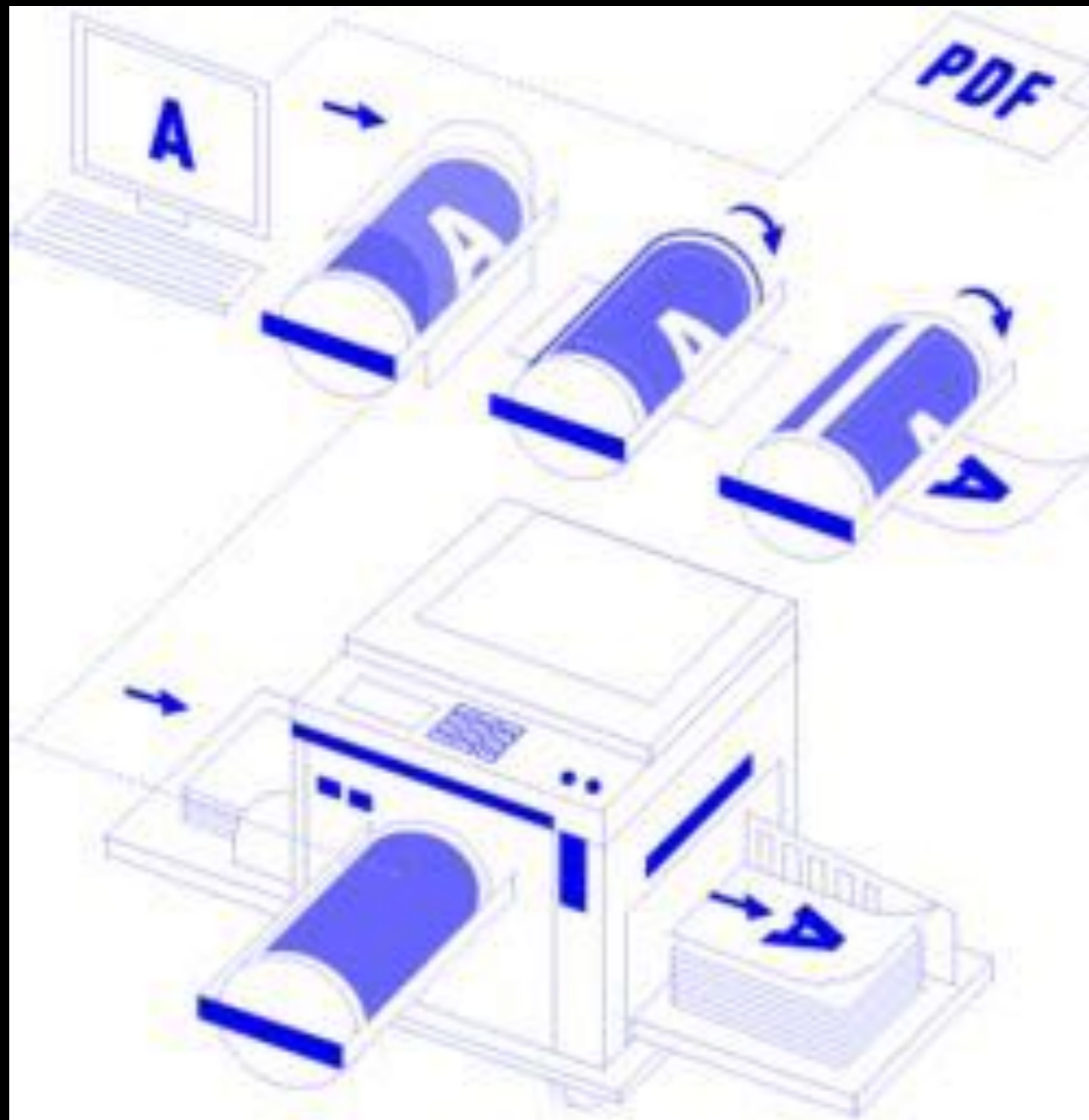


Advanced Riso Print

How to get better prints from the Riso machine



<https://nl.pinterest.com/kunstendrukwerk/riso-print-colourcharts-and-instructions/>

<https://nl.pinterest.com/kunstendrukwerk/riso-print-inspiration/>



Color chart

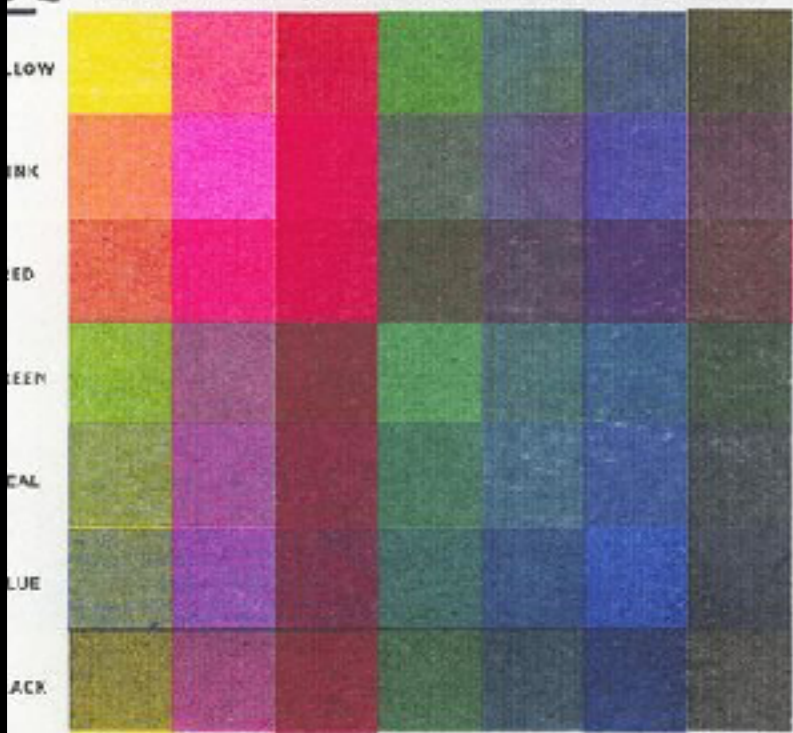
Teams of 3: design and print a color chart
making = research



PAPER PUSHER PRINTWORKS

2-COLOUR RISOGRAPH OVERPRINT SAMPLE CHART*
HORIZONTAL BARS = 35% OPACITY / VERTICAL BARS = 65% OPACITY

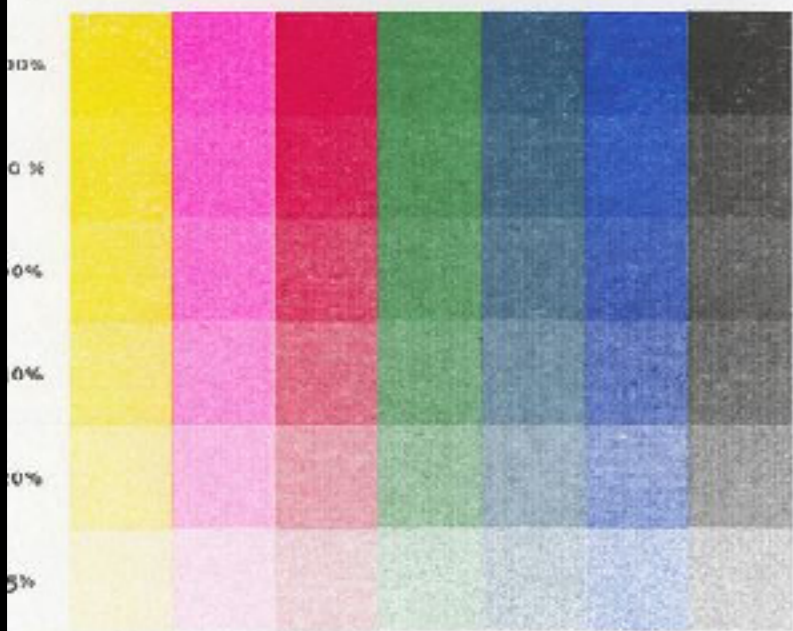
WWW.PAPERPUSHER.CA
INFO@PAPERPUSHER.CA
416.458.2278



VARIOUS LINE WEIGHTS



YELLOW PINK RED GREEN TEAL BLUE BLACK

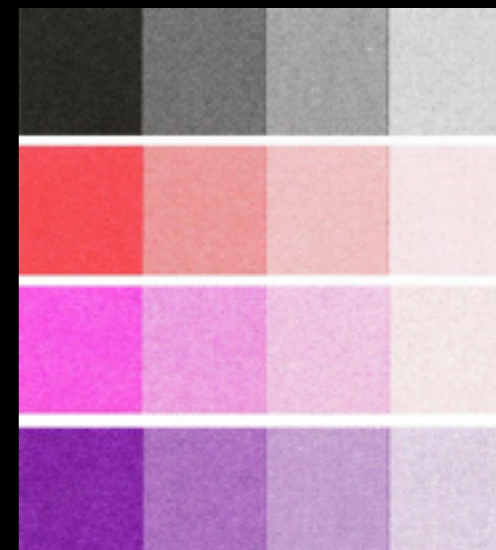
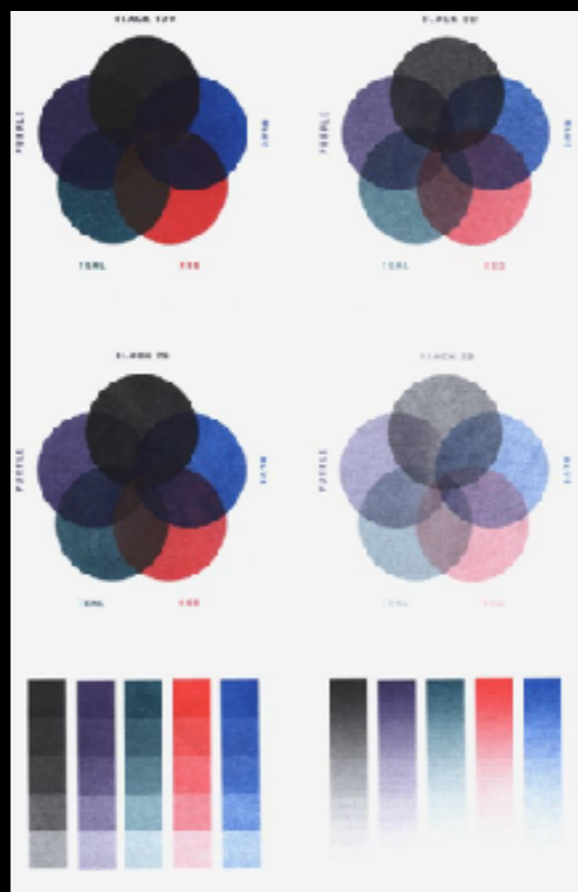


VARIOUS TYPE SIZES

16PT. - Dandelion parsnip kale
12PT. - Dandelion parsnip kale bean...
11PT. - Dandelion parsnip kale bean broccoli
10PT. - Dandelion parsnip kale bean broccoli...
8PT. - Dandelion parsnip kale bean broccoli garlic radish...

* OVERPRINT 2 OR MORE COLOURS, IN DIFFERENT OPACITIES, FOR MORE VARIATIONS
** CONSIDER USING COLOURED PAPER STOCK TO ALTER BASE TONE

MAX PAPER SIZE: 11" X 17" (A3)
MAX WEIGHT FROM 15LB TO 12PT.



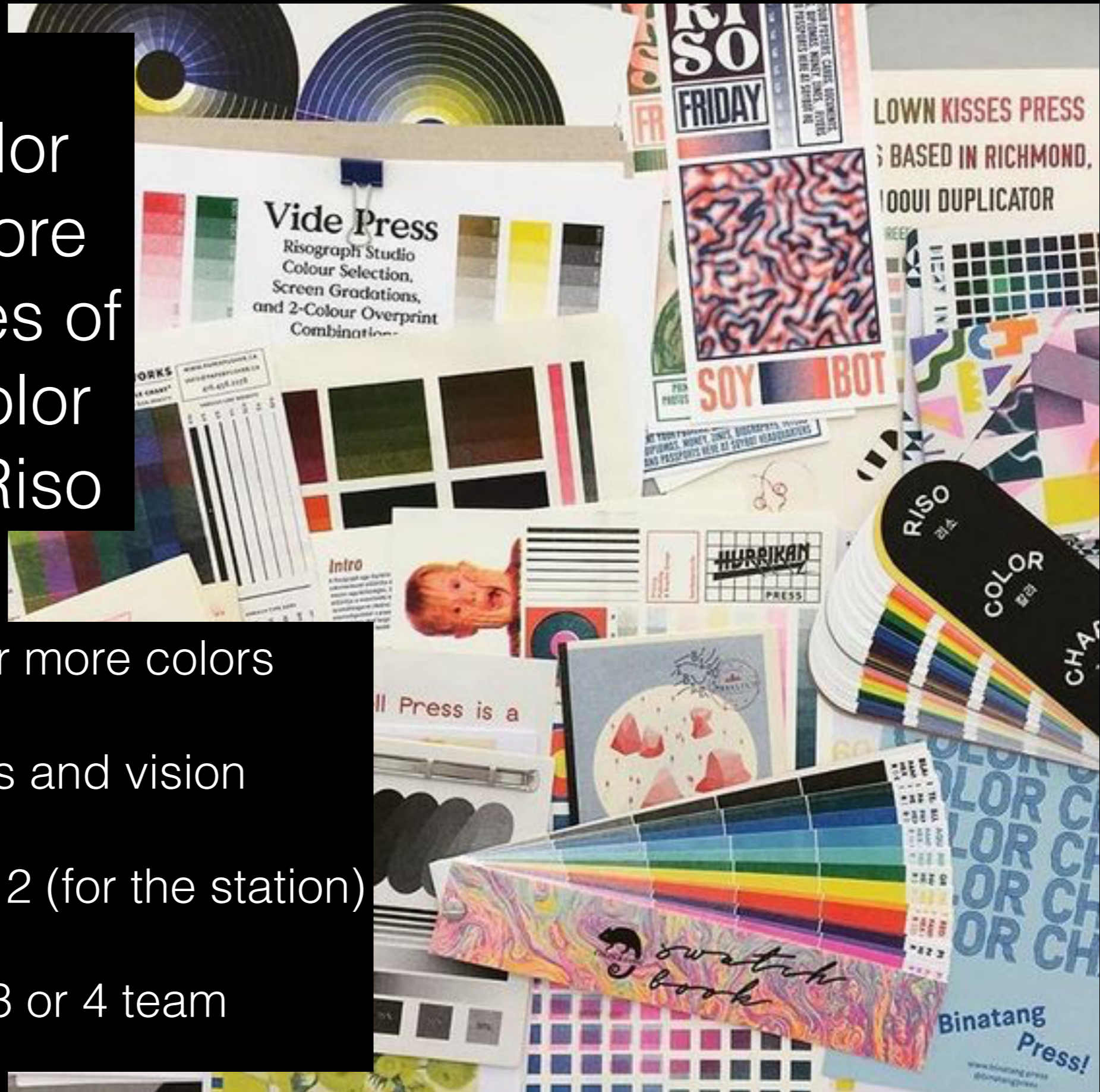
Design a color chart to explore the possibilities of the limited color pallet of the Riso

Use two, three or more colors

Show your skills and vision

edition: x students + 2 (for the station)

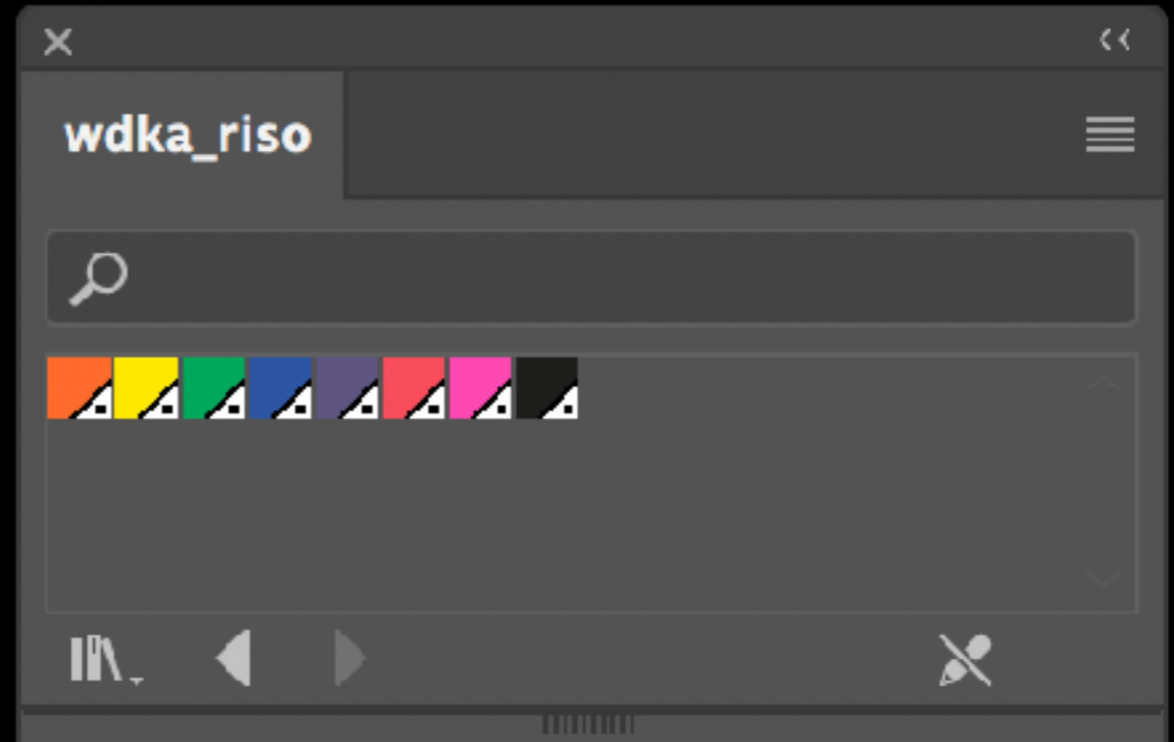
next meeting 3 or 4 team

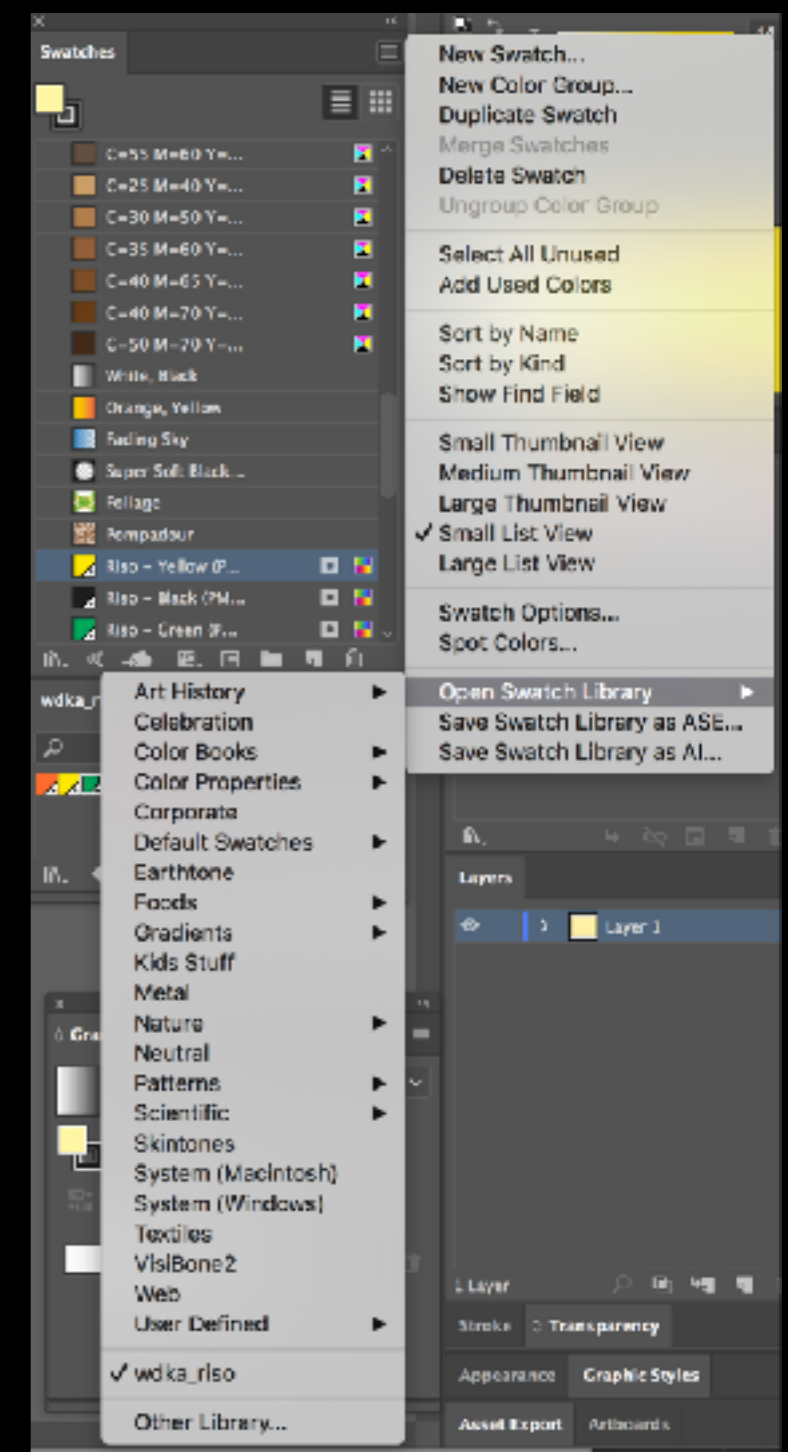


Color separating in Illustrator

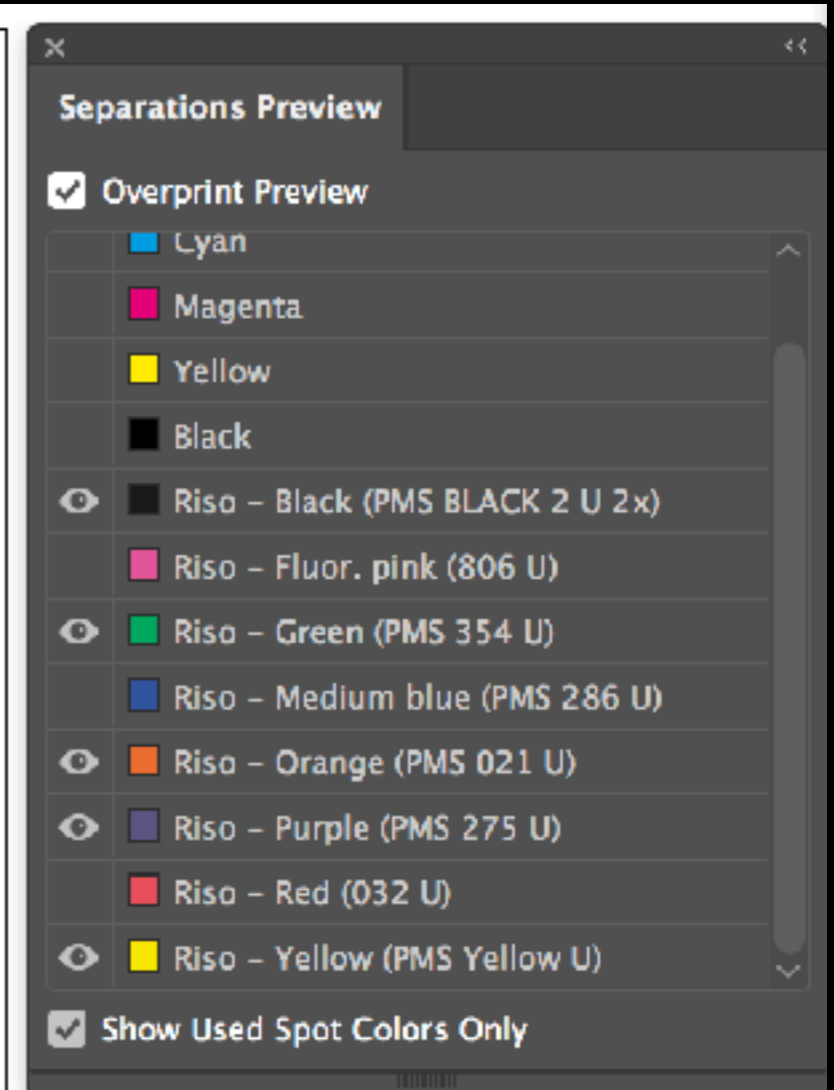
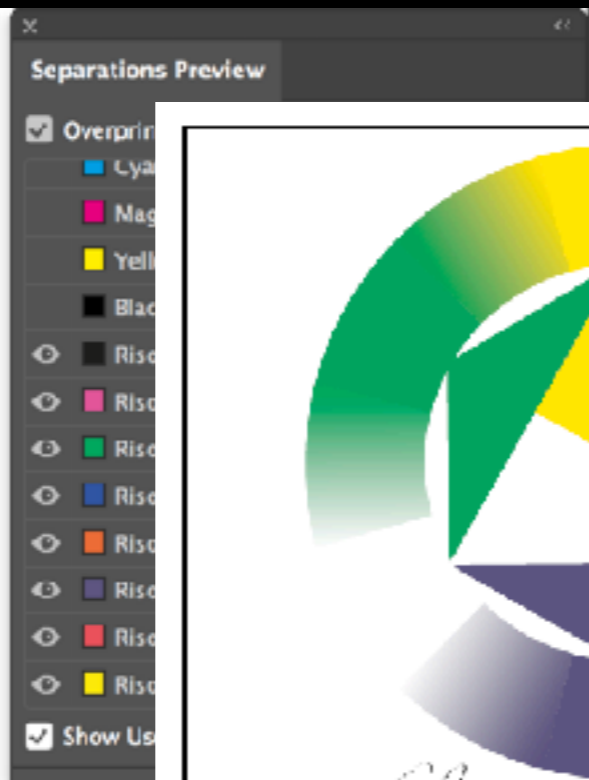
Adobe Swatch Exchange

- Frisse types De Kijm made a file with color swatches to use in Adobe programs
- http://frisstypes.nl/dekijm/riso_kleuren.php
- I made one for the wdka colors



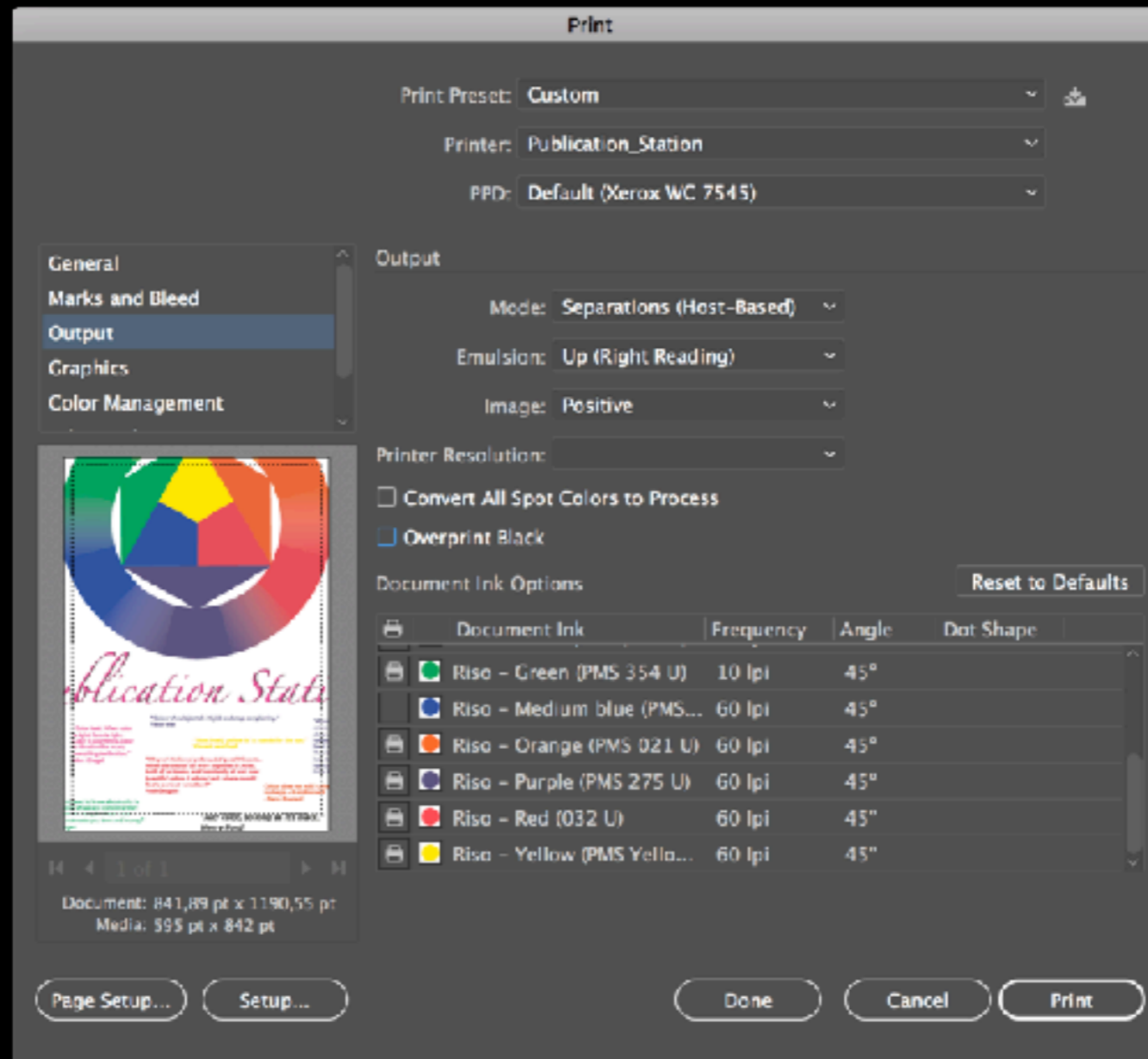


Window >> Swatches
Open Swatch Library >> Other
Library
Select and open your .ASE file.



Windows >> Separation Preview

Also in Indesign



Print

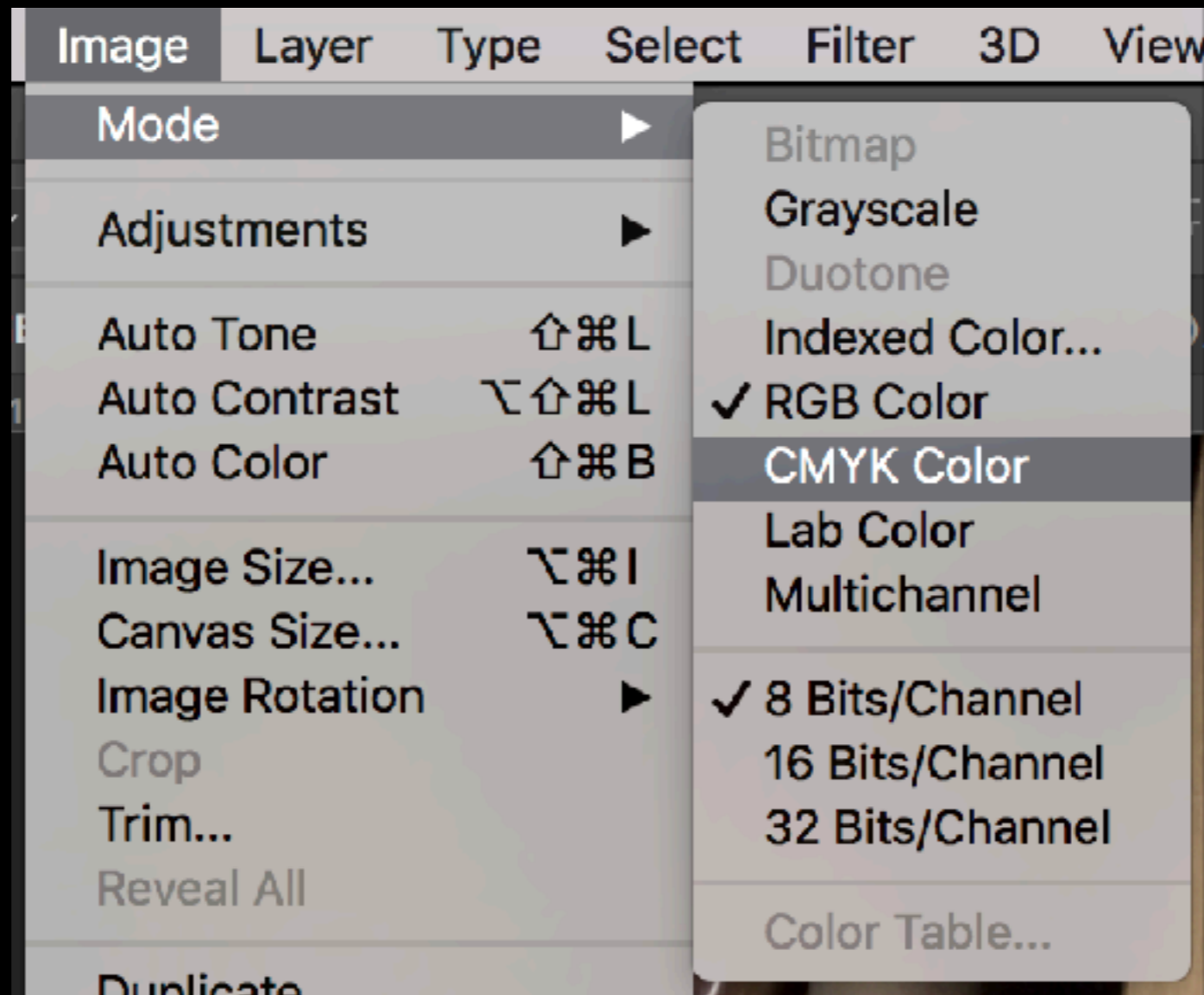
Output

Mode:Seprations

Select color to print

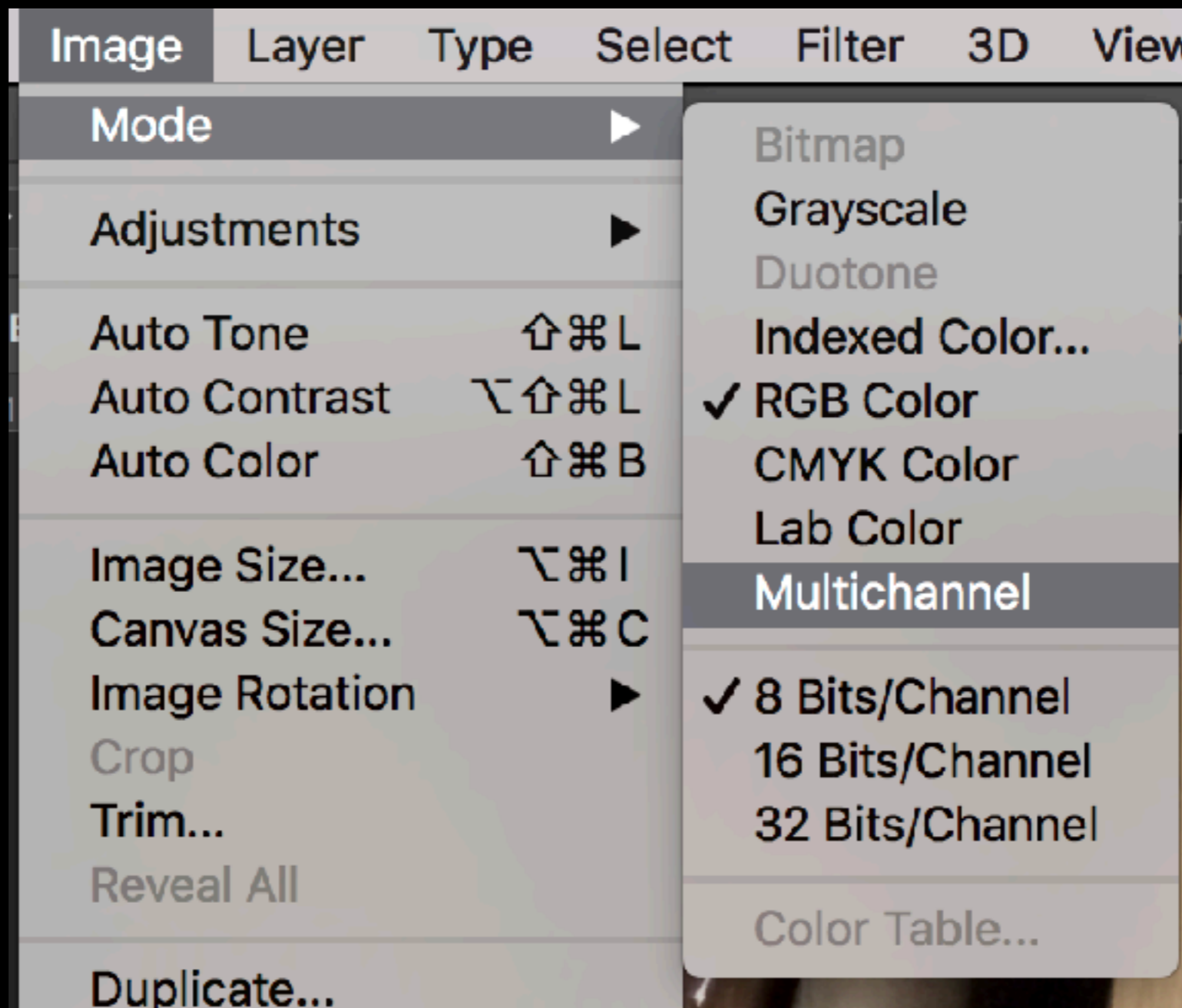
- it uses the Dot screen settings from Illustrator not from the Riso driver

Color separating in Photoshop



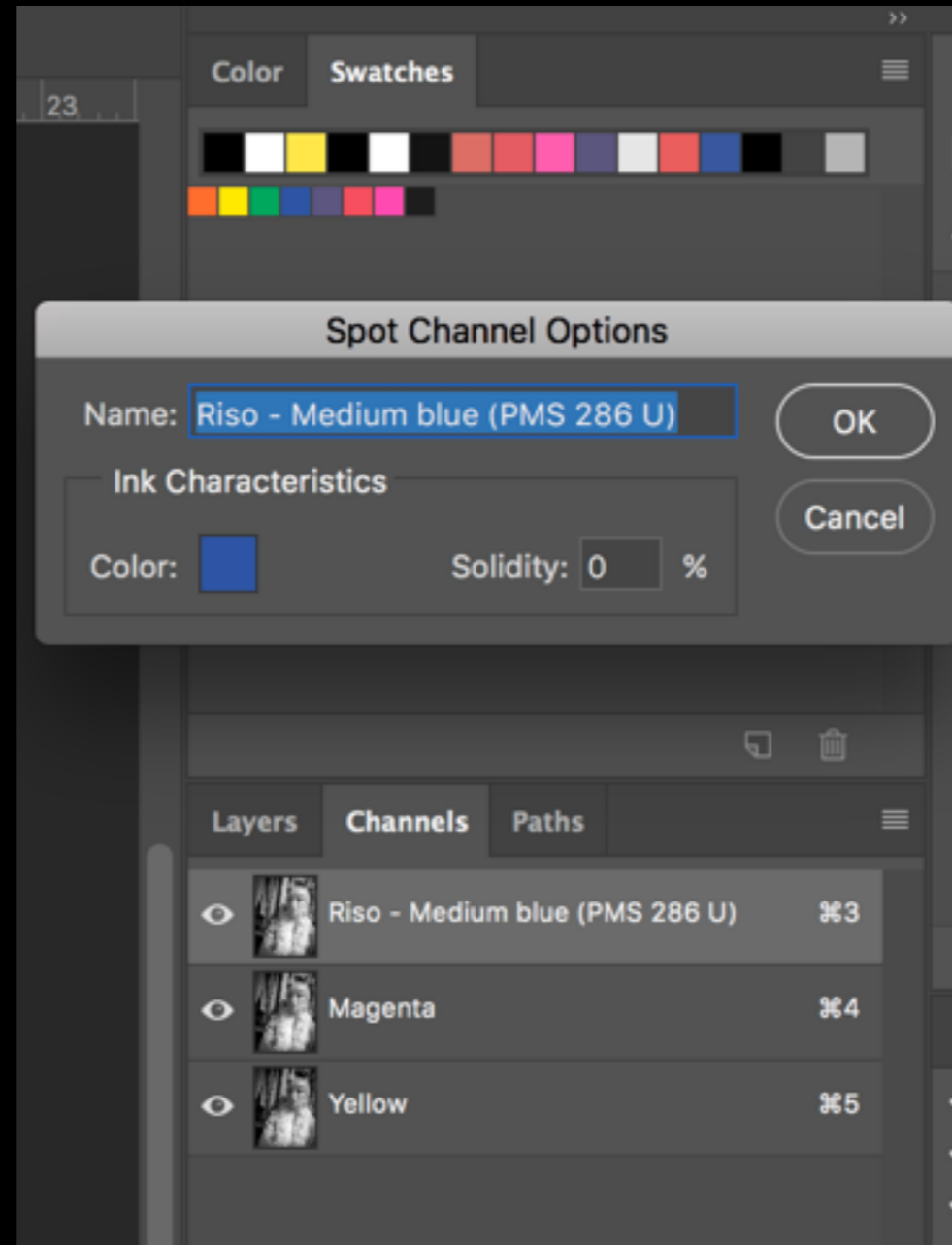
RGB to CMYK

And replace those 4 colors
for the riso print colors



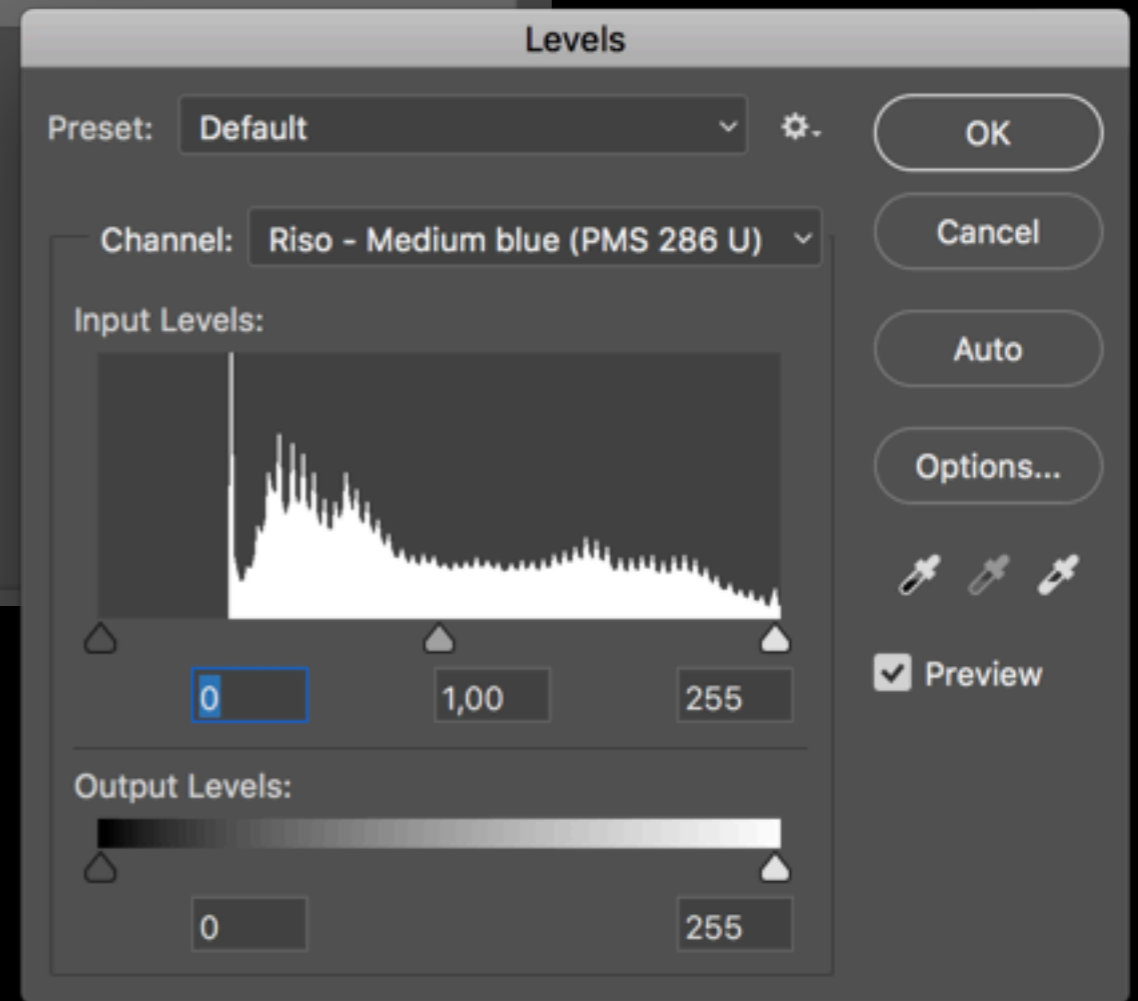
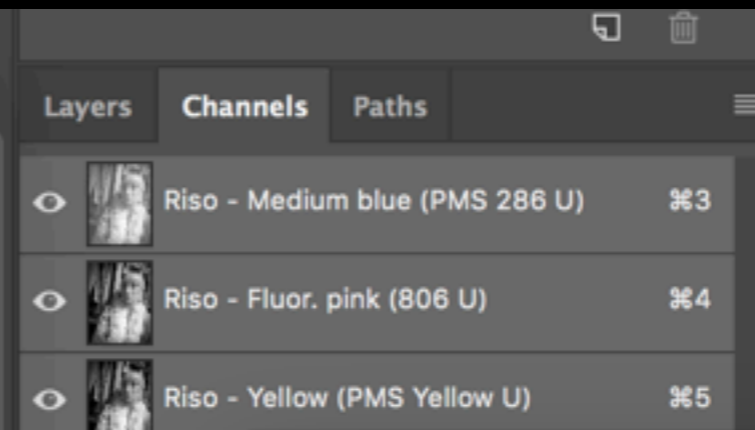
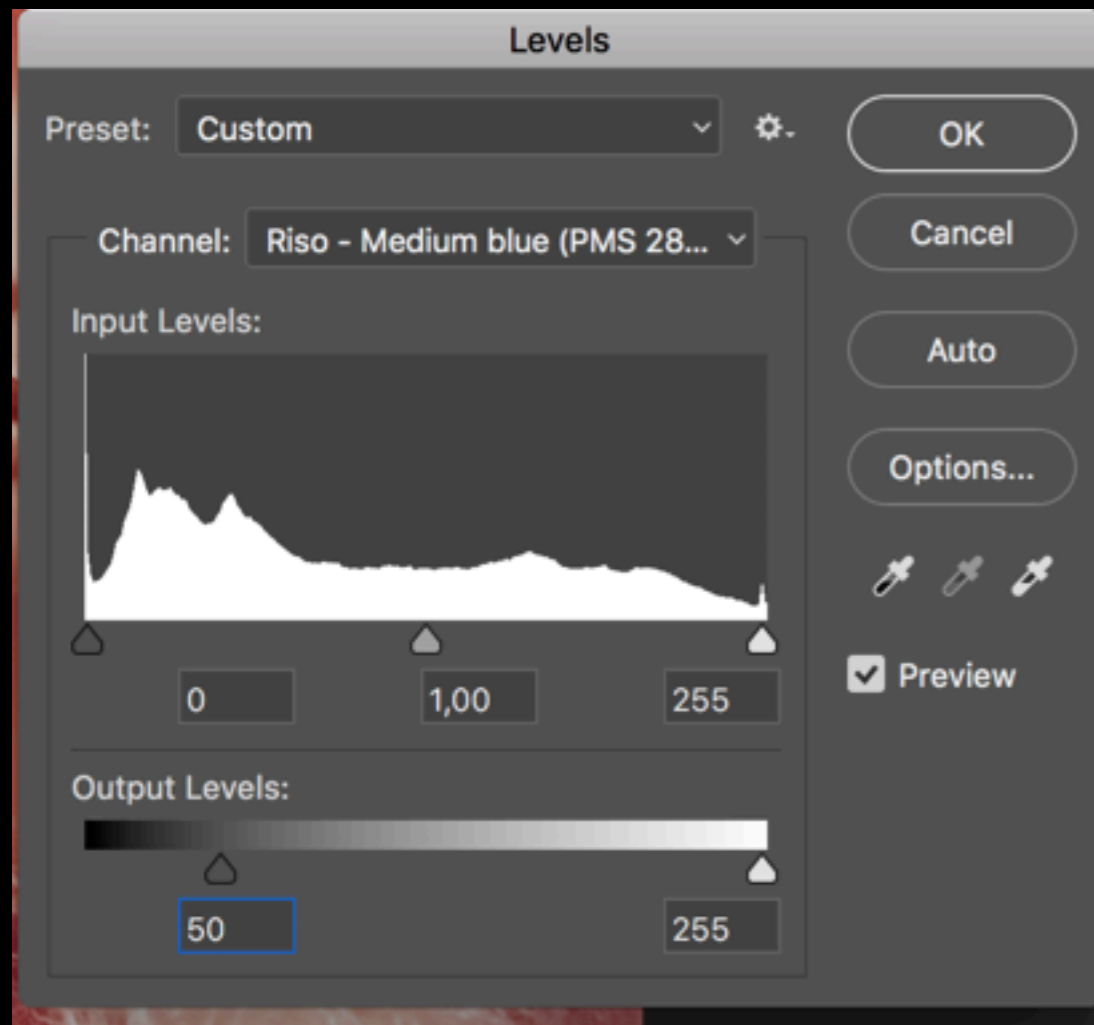
RGB to Multichannel

Convert to C-M-Y



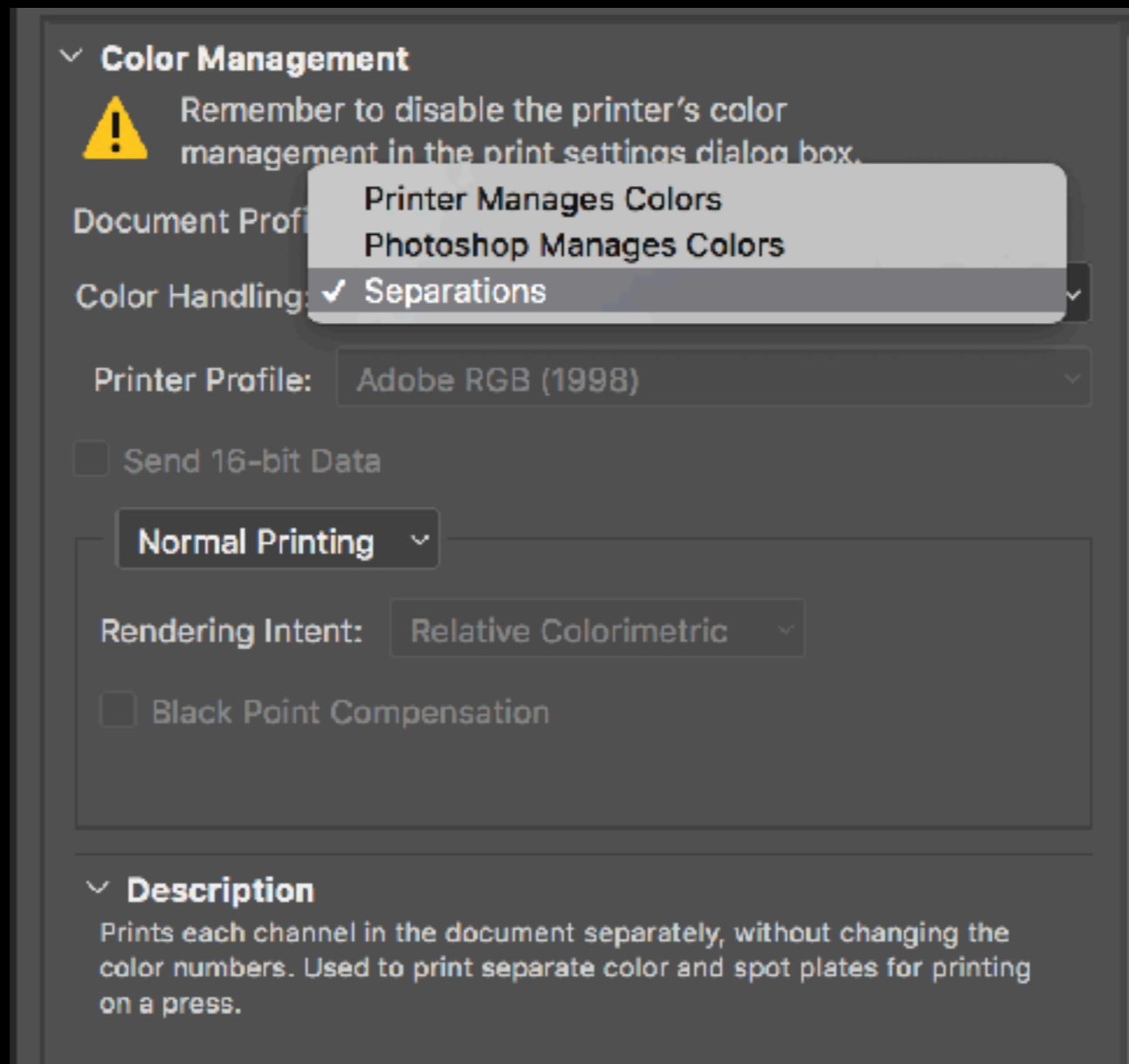
Multichannel to Riso Colors

Work in Color channels not in layers!



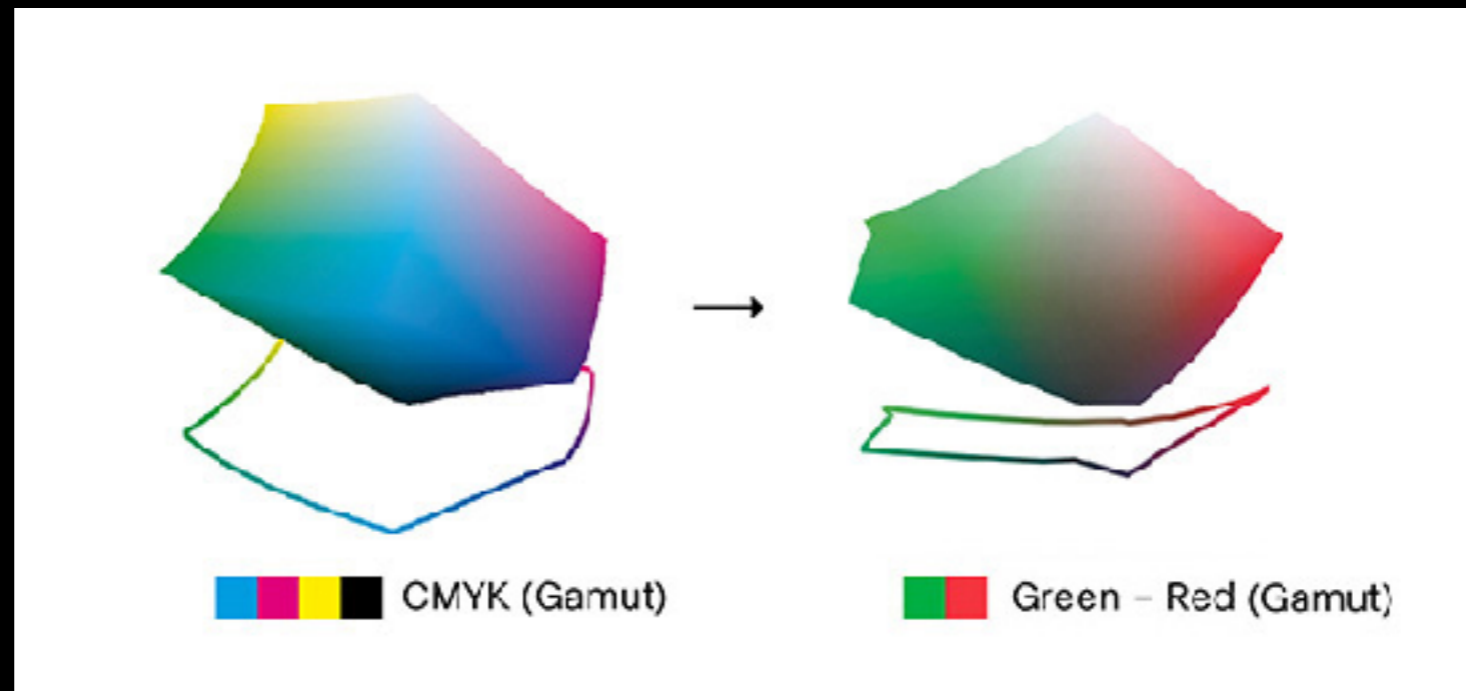
Adjust the output levels

Darkest black on 50



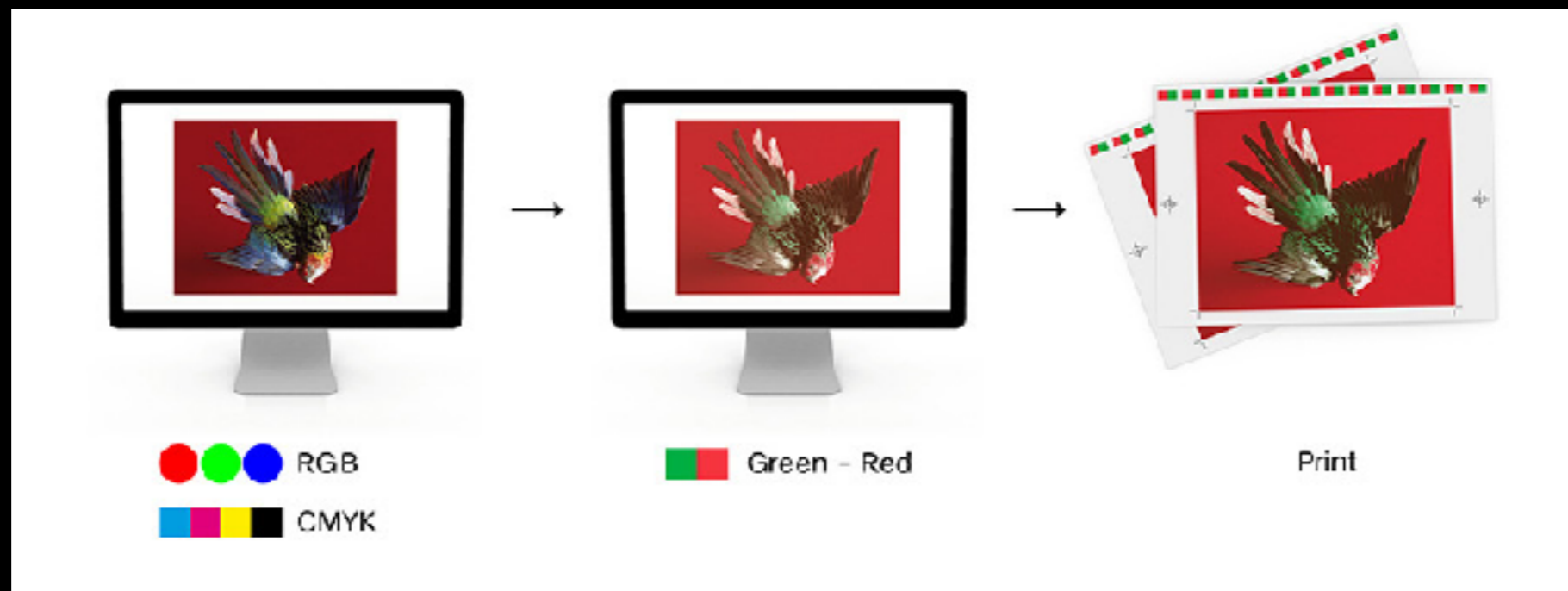
Print separations

First select the channel you want to print.

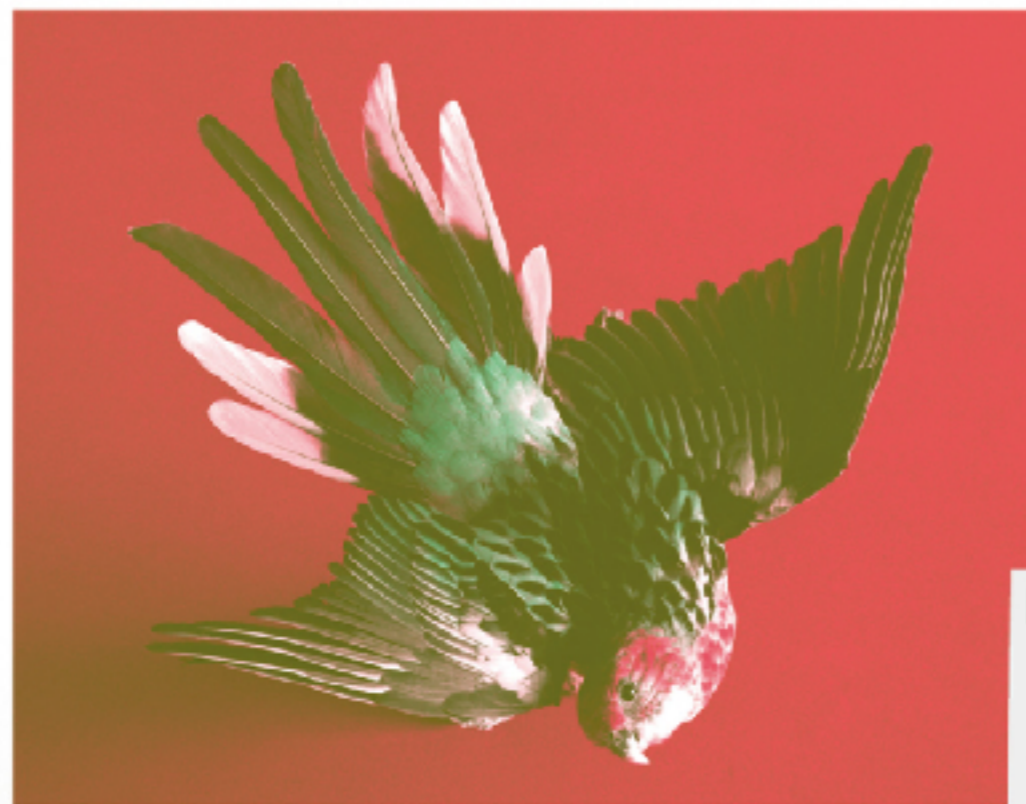


Multichannel profiles

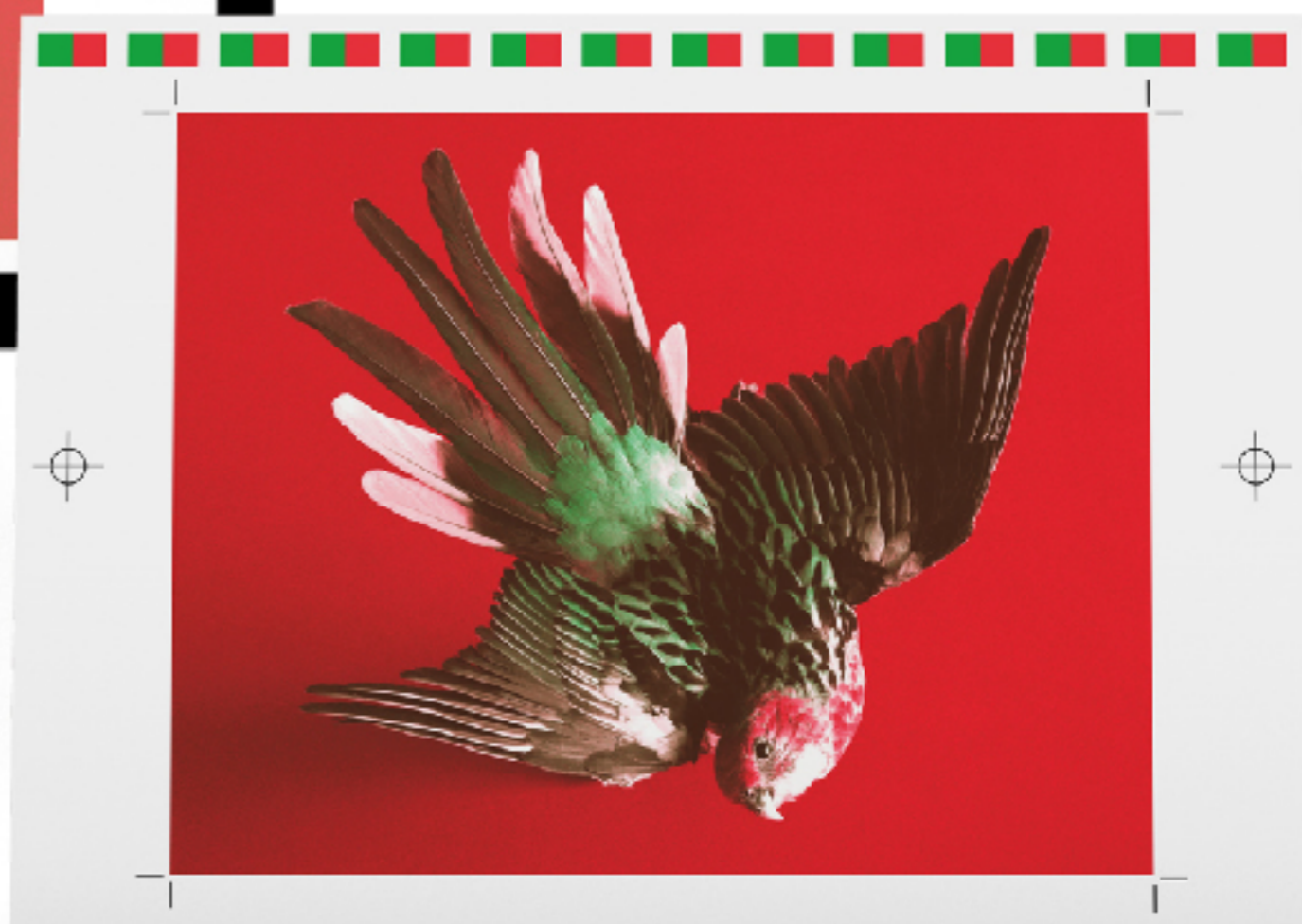
<http://colorlibrary.ch>



Photoshop Preview



Printed Preview (Press Simulation)



Please read

<http://colorlibrary.ch/how-to-install/>

About

Color Library is a database of color profiles for artists, designers, photographers, and printers who are looking for a novel yet professional color management solution. Color Library offers a large variety of color combinations, from basic colors to metallics, neons, and pastels.

Color Library was created within the Workflow research and development project. It was launched in 2014 during a workshop held at ECAL/University of Art and Design Lausanne with Franz Sigg (RIT/Rochester Institute of Technology) and Maximage. Initially developed for experimental purposes, the project was extended in order to create an online platform for development and distribution. This nonprofit website has a dual objective: to distribute an innovative tool for artists, designers, and printers, and to make students aware of color theory and color management. All income from Color Library is reinvested in research and development.

Workflow is a research project at ECAL/University of Art and Design Lausanne on printing technologies, led by David Keshavjee, Guy Meldem, Tatiana Rihs and Julien Tavelli (Maximage) and funded by HES-SO/University of Applied Sciences Western Switzerland.

ECAL/University of Art and Design Lausanne
Research and Development (R&D) – Workflow Project

Printing

Use the two drum machine as a one drum machine
when run in to troubles with 'wet in wet print'

Final assignment

one student

one design

Things to decide for the final assignment:

- Exhibition
Edition? Just one excellent print to exhibit?
one print for every participant
print a edition and swap after the course?
- Publication? edition x students + 1 for the Station
- A collectief theme?
- All prints on the same kind of paper?
- All prints the same size and orientation?